



**#POWERING
POSSIBILITIES**

Annexion

MESSAGE FROM THE DIRECTOR

Annexion was set up with the vision of making a real impact in the Built Environment sector through talent matchmaking and human resources advisory services.

As the Built Environment Sector directly impacts the transformation of humanity and the environment, hence our work carries real meaningful purpose.

I strongly believe that as we stay relevant in the sector, we grow together as an organization, and we are able to invest in the career growth of every Annexion consultant. Your success defines the success of Annexion.

I invite you to join us on this purposeful journey to power possibilities and to make the world a better place for all of us!



ETHAN TAN
Director, Annexion

ABOUT US

At Annexion, we envision a dynamic future for the Built Environment sector, acting as a global headhunting consultancy that seamlessly connects stakeholders in Property & Real Estate, Construction & Engineering, Interior Design & Architecture, and Built Technology.

Our mission is to power possibilities for clients, accelerating businesses with exceptional talent, and adding value by fostering connections across the industry.

Annexion believes in empowering candidates, providing unique opportunities to elevate careers.

#POWERINGPOSSIBILITIES



#JOINANNEXION

WHAT WE OFFER



MARKET INSIGHTS

We take immense pride in our deep market knowledge, a key asset that provides our clients and candidates with a competitive edge in the expansive Built Environment sector.

Our insights and expertise facilitate informed decisions and drive success for everyone we work with.



GLOBAL EXPERTISE

Annexion understands the intricacies and risks inherent in Built Environment investments on a global scale, especially in developing countries.

We're dedicated to navigating these challenges effectively, ensuring that your career with us is as impactful as it is rewarding.



COMMITMENT CULTURE

Our company culture is marked by a variety of initiatives and activities designed to foster team bonding and personal growth.

We're fully committed to providing every resource and support necessary to create a positive and collaborative work environment.

LEARNING & DEVELOPMENT

E-MODULES

Empower yourself with a series designed for effective candidate management in recruitment.

QUARTERLY DEVELOPMENT PLANS

Tailored plans to ensure continuous advancement in your career journey.

1-ON-1 COACHING

Personalized sessions to enhance your skills and professional growth.



INCENTIVES & BENEFITS



QUARTERLY TEAM BONDING

Strengthen team connections through regular engaging activities.



MONTHLY COMMISSION SCHEME

No cap or threshold.



LONG-TERM INCENTIVE PLAN

Secure your financial future with our rewarding long-term incentives.



MONTHLY & ANNUAL AWARDS

Recognizing and celebrating small wins and excellence in our team.

WHY ANNEXION?



“ I have enjoyed my career journey with Annexion for almost 2 years. With great teammates, core values, and efficient tools, Annexion offers an amazing platform to learn and grow as a professional. ”

KOTOMI MORI, RECRUITMENT SPECIALIST

“ Annexion offers me the opportunity to receive proper guidance and mentorship, enabling me to sharpen my recruitment skillset and excel in my career in talent acquisition. ”

DANIEL LIM, RECRUITMENT SPECIALIST

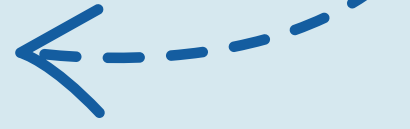


“ Great mentors, great colleagues, and an amazing learning experience that pushes me to be the best version of myself. What more could I ask for? ”

SHARWN GILL, RECRUITMENT SPECIALIST



OUR CORE VALUES

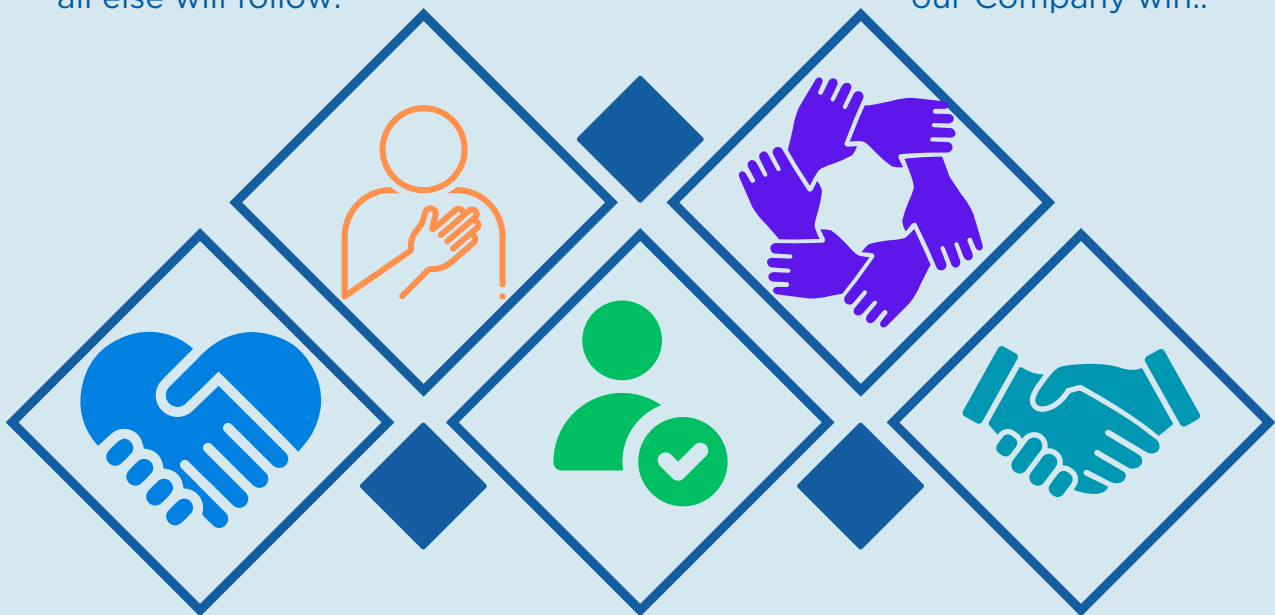


COMMITMENT

Focus on our clients and candidates and all else will follow.

TEAMWORK

We work collaboratively, across boundaries, to meet the needs of our stakeholders and to help our Company win..



RESPECT

We value each other, encourage personal development and reward performance.

ACCOUNTABILITY

We are personally accountable for delivering on our commitments.

HUMILITY

We are always open to learning and constructive feedback to be the best versions of ourselves.

#JOIN

ANNEXION

Get In Touch



Message Us

info@annexion-partners.com



Office Location

11 Collyer Quay #12-01
The Arcade
Singapore 049317



Call +65 6432 8316



More Information

www.annexion-partners.com